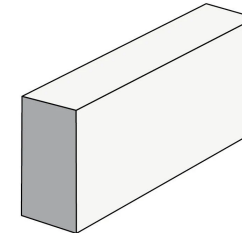


Product Details

Product Range	Architec Smooth
Texture Finish	Smooth
Colours	Alabaster SNSW,NNSW,VIC, Charcoal SNSW,NNSW,VIC, Almond SNSW,NNSW,VIC & Pearl Grey SNSW,NNSW,VIC
Product Code	
Format	10.31 Solid
Place of Manufacture	Oakdale, New South Wales
Length (mm)	390
Width (mm)	90
Height (mm)	190
Size	390x90x190
Core Volume (%)	-
Characteristic Unconfined Compressive Strength (f'uc) MPa	-
Minimum Shell Thickness (mm)	-
Weight	-
Units Per Tonne	67.567567567568
Units Per Pallet	144
Units per Square Metre	12.5
Durability Class	General Purpose
Slip Resistance	
Wall Mass Inc Hollow	-
Solar Absorption Rating	0.48
LRV	-
FRL	-
EPD	Yes
Declare	No
Recycled Content %	-

Diagram



Fire Resistance Levels^

Structural Adequacy	-
Integrity	-
Insulation	-

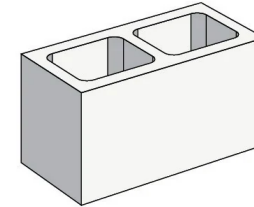
Notes

Maximum slenderness ratio (srf) from AS3700:2018 Table 6.1 is: 18.0 at 60 minutes | 17.0 at 90 minutes | 16.0 at 120 minutes | 15.5 at 180 minutes | 15.5 at 240 minutes. This data represents average results from production lots based on the results achieved by samples selected at random for testing. Figures are accurate at date of publication and subject to change without notice. Contact us for confirmation of product specification. Tested as per AS/NZS 4455.1: 2008 and 4456: 2003. Fire resistance levels as per AS3700: 2018. Acoustic opinion derived from Day Design Pty Ltd. 2012. Tested in accordance with AS 1191:1001 and AS/NZS 1276.1:1999.

Product Details

Product Range	Architec Smooth
Texture Finish	Smooth
Colours	Charcoal SNSW,NNSW,VIC, Almond SNSW,NNSW,VIC, Pearl Grey SNSW,NNSW,VIC & Alabaster SNSW,NNSW,VIC
Product Code	
Format	20.01 Full
Place of Manufacture	Oakdale, New South Wales
Length (mm)	390
Width (mm)	190
Height (mm)	190
Size	390x190x190
Core Volume (%)	-
Characteristic Unconfined Compressive Strength (f'uc) MPa	-
Minimum Shell Thickness (mm)	30
Weight	-
Units Per Tonne	65.789473684211
Units Per Pallet	90
Units per Square Metre	-
Durability Class	General Purpose
Slip Resistance	
Wall Mass Inc Hollow	199
Solar Absorption Rating	0.87
LRV	-
FRL	-
EPD	Yes
Declare	No
Recycled Content %	-

Diagram



Fire Resistance Levels[^]

Structural Adequacy	60 to 240
Integrity	60
Insulation	60

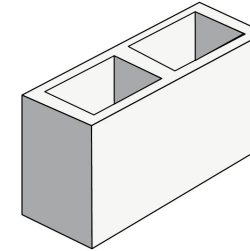
Notes

Maximum slenderness ratio (srf) from AS3700:2018 Table 6.1 is: 18.0 at 60 minutes | 17.0 at 90 minutes | 16.0 at 120 minutes | 15.5 at 180 minutes | 15.5 at 240 minutes. This data represents average results from production lots based on the results achieved by samples selected at random for testing. Figures are accurate at date of publication and subject to change without notice. Contact us for confirmation of product specification. Tested as per AS/NZS 4455.1: 2008 and 4456: 2003. Fire resistance levels as per AS3700: 2018. Acoustic opinion derived from Day Design Pty Ltd. 2012. Tested in accordance with AS 1191:1001 and AS/NZS 1276.1:1999.

Product Details

Product Range	Architec Smooth
Texture Finish	Honed
Colours	Pearl Grey, Charcoal SNSW,NNSW,VIC, Alabaster SNSW,NNSW,VIC & Almond SNSW,NNSW,VIC
Product Code	
Format	15.01 Full
Place of Manufacture	Oakdale, New South Wales
Length (mm)	390
Width (mm)	140
Height (mm)	190
Size	390x140x190
Core Volume (%)	-
Characteristic Unconfined Compressive Strength (f'uc) MPa	-
Minimum Shell Thickness (mm)	25
Weight	12.835
Units Per Tonne	71.942446043166
Units Per Pallet	120
Units per Square Metre	-
Durability Class	General Purpose
Slip Resistance	
Wall Mass Inc Hollow	186
Solar Absorption Rating	0.69
LRV	-
FRL	-
EPD	Yes
Declare	No
Recycled Content %	-

Diagram



Fire Resistance Levels[^]

Structural Adequacy	60 to 240
Integrity	60
Insulation	60

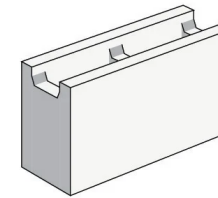
Notes

Maximum slenderness ratio (srf) from AS3700:2018 Table 6.1 is: 18.0 at 60 minutes | 17.0 at 90 minutes | 16.0 at 120 minutes | 15.5 at 180 minutes | 15.5 at 240 minutes. This data represents average results from production lots based on the results achieved by samples selected at random for testing. Figures are accurate at date of publication and subject to change without notice. Contact us for confirmation of product specification. Tested as per AS/NZS 4455.1: 2008 and 4456: 2003. Fire resistance levels as per AS3700: 2018. Acoustic opinion derived from Day Design Pty Ltd. 2012. Tested in accordance with AS 1191:1001 and AS/NZS 1276.1:1999.

Product Details

Product Range	Architec Smooth
Texture Finish	Smooth
Colours	Pearl Grey SNSW,NNSW,VIC, Alabaster SNSW,NNSW,VIC, Almond & Charcoal SNSW,NNSW,VIC
Product Code	
Format	15.42 Recessed Web
Place of Manufacture	Oakdale, New South Wales
Length (mm)	390
Width (mm)	140
Height (mm)	190
Size	390x140x190
Core Volume (%)	-
Characteristic Unconfined Compressive Strength (f 'uc) MPa	-
Minimum Shell Thickness (mm)	25
Weight	31.2
Units Per Tonne	80
Units Per Pallet	144
Units per Square Metre	-
Durability Class	General Purpose
Slip Resistance	
Wall Mass Inc Hollow	140
Solar Absorption Rating	0.69
LRV	-
FRL	-
EPD	Yes
Declare	No
Recycled Content %	-

Diagram



Fire Resistance Levels^

Structural Adequacy	60 to 240
Integrity	Hollow: 60. Core Filled: 120
Insulation	Hollow: 60. Core Filled: 120

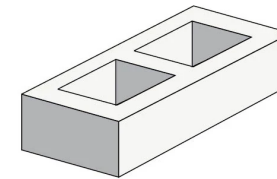
Notes

Maximum slenderness ratio (srf) from AS3700:2018 Table 6.1 is: 18.0 at 60 minutes | 17.0 at 90 minutes | 16.0 at 120 minutes | 15.5 at 180 minutes | 15.5 at 240 minutes. This data represents average results from production lots based on the results achieved by samples selected at random for testing. Figures are accurate at date of publication and subject to change without notice. Contact us for confirmation of product specification. Tested as per AS/NZS 4455.1: 2008 and 4456: 2003. Fire resistance levels as per AS3700: 2018. Acoustic opinion derived from Day Design Pty Ltd. 2012. Tested in accordance with AS 1191:1001 and AS/NZS 1276.1:1999.

Product Details

Product Range	Architec Smooth
Texture Finish	Smooth
Colours	Almond, Pearl Grey & Charcoal SNSW,NNSW,VIC
Product Code	
Format	20.71 Half Height
Place of Manufacture	-
Length (mm)	390
Width (mm)	190
Height (mm)	90
Size	390x190x90
Core Volume (%)	-
Characteristic Unconfined Compressive Strength (f'uc) MPa	-
Minimum Shell Thickness (mm)	-
Weight	-
Units Per Tonne	-
Units Per Pallet	-
Units per Square Metre	-
Durability Class	General Purpose
Slip Resistance	
Wall Mass Inc Hollow	-
Solar Absorption Rating	0.55
LRV	-
FRL	-
EPD	Yes
Declare	No
Recycled Content %	-

Diagram



Fire Resistance Levels^

Structural Adequacy	-
Integrity	-
Insulation	-

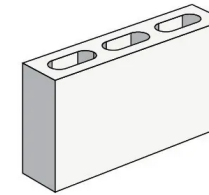
Notes

Maximum slenderness ratio (srf) from AS3700:2018 Table 6.1 is: 18.0 at 60 minutes | 17.0 at 90 minutes | 16.0 at 120 minutes | 15.5 at 180 minutes | 15.5 at 240 minutes. This data represents average results from production lots based on the results achieved by samples selected at random for testing. Figures are accurate at date of publication and subject to change without notice. Contact us for confirmation of product specification. Tested as per AS/NZS 4455.1: 2008 and 4456: 2003. Fire resistance levels as per AS3700: 2018. Acoustic opinion derived from Day Design Pty Ltd. 2012. Tested in accordance with AS 1191:1001 and AS/NZS 1276.1:1999.

Product Details

Product Range	Architec Smooth
Texture Finish	Smooth
Colours	Pearl Grey SNSW,NNSW,VIC, Alabaster NSW, Charcoal SNSW,NNSW,VIC & Almond SNSW,NNSW,VIC
Product Code	
Format	10.01 Full
Place of Manufacture	Oakdale, New South Wales
Length (mm)	390
Width (mm)	90
Height (mm)	190
Size	390x90x190
Core Volume (%)	-
Characteristic Unconfined Compressive Strength (f'uc) MPa	-
Minimum Shell Thickness (mm)	25
Weight	-
Units Per Tonne	90.909090909091
Units Per Pallet	180
Units per Square Metre	12.5
Durability Class	General Purpose
Slip Resistance	
Wall Mass Inc Hollow	150
Solar Absorption Rating	0.69
LRV	-
FRL	-
EPD	Yes
Declare	No
Recycled Content %	-

Diagram



Fire Resistance Levels^

Structural Adequacy	60 to 240
Integrity	60
Insulation	60

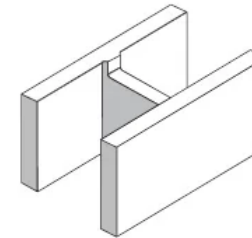
Notes

Maximum slenderness ratio (srf) from AS3700:2018 Table 6.1 is: 18.0 at 60 minutes | 17.0 at 90 minutes | 16.0 at 120 minutes | 15.5 at 180 minutes | 15.5 at 240 minutes. This data represents average results from production lots based on the results achieved by samples selected at random for testing. Figures are accurate at date of publication and subject to change without notice. Contact us for confirmation of product specification. Tested as per AS/NZS 4455.1: 2008 and 4456: 2003. Fire resistance levels as per AS3700: 2018. Acoustic opinion derived from Day Design Pty Ltd. 2012. Tested in accordance with AS 1191:1001 and AS/NZS 1276.1:1999.

Product Details

Product Range	Architec Smooth
Texture Finish	Smooth
Colours	Charcoal, Pearl Grey, Alabaster & Almond
Product Code	
Format	30.48 H Block
Place of Manufacture	-
Length (mm)	390
Width (mm)	290
Height (mm)	190
Size	390x290x190
Core Volume (%)	-
Characteristic Unconfined Compressive Strength (f'uc) MPa	-
Minimum Shell Thickness (mm)	-
Weight	-
Units Per Tonne	-
Units Per Pallet	-
Units per Square Metre	-
Durability Class	General Purpose
Slip Resistance	
Wall Mass Inc Hollow	-
Solar Absorption Rating	0.87
LRV	-
FRL	-
EPD	Yes
Declare	No
Recycled Content %	-

Diagram



Fire Resistance Levels^

Structural Adequacy	-
Integrity	-
Insulation	-

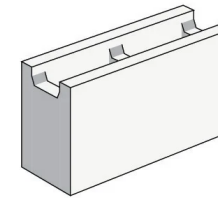
Notes

Maximum slenderness ratio (srf) from AS3700:2018 Table 6.1 is: 18.0 at 60 minutes | 17.0 at 90 minutes | 16.0 at 120 minutes | 15.5 at 180 minutes | 15.5 at 240 minutes. This data represents average results from production lots based on the results achieved by samples selected at random for testing. Figures are accurate at date of publication and subject to change without notice. Contact us for confirmation of product specification. Tested as per AS/NZS 4455.1: 2008 and 4456: 2003. Fire resistance levels as per AS3700: 2018. Acoustic opinion derived from Day Design Pty Ltd. 2012. Tested in accordance with AS 1191:1001 and AS/NZS 1276.1:1999.

Product Details

Product Range	Architec Smooth
Texture Finish	Polished
Colours	Almond &
Product Code	
Format	15.42 Recessed Web
Place of Manufacture	Oakdale, New South Wales
Length (mm)	390
Width (mm)	140
Height (mm)	190
Size	390x140x90
Core Volume (%)	-
Characteristic Unconfined Compressive Strength (f'uc) MPa	-
Minimum Shell Thickness (mm)	-
Weight	-
Units Per Tonne	69.93006993007
Units Per Pallet	120
Units per Square Metre	-
Durability Class	General Purpose
Slip Resistance	
Wall Mass Inc Hollow	-
Solar Absorption Rating	0.55
LRV	-
FRL	-
EPD	Yes
Declare	No
Recycled Content %	-

Diagram



Fire Resistance Levels^

Structural Adequacy	-
Integrity	-
Insulation	-

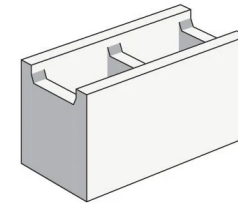
Notes

Maximum slenderness ratio (srf) from AS3700:2018 Table 6.1 is: 18.0 at 60 minutes | 17.0 at 90 minutes | 16.0 at 120 minutes | 15.5 at 180 minutes | 15.5 at 240 minutes. This data represents average results from production lots based on the results achieved by samples selected at random for testing. Figures are accurate at date of publication and subject to change without notice. Contact us for confirmation of product specification. Tested as per AS/NZS 4455.1: 2008 and 4456: 2003. Fire resistance levels as per AS3700: 2018. Acoustic opinion derived from Day Design Pty Ltd. 2012. Tested in accordance with AS 1191:1001 and AS/NZS 1276.1:1999.

Product Details

Product Range	Architec Smooth
Texture Finish	Smooth
Colours	Almond SNSW,NNSW,VIC, Alabaster SNSW,NNSW,VIC, Charcoal SNSW,NNSW,VIC & Pearl Grey SNSW,NNSW,VIC
Product Code	
Format	20.42 Recessed Web
Place of Manufacture	Oakdale, New South Wales
Length (mm)	390
Width (mm)	190
Height (mm)	190
Size	390x190x190
Core Volume (%)	-
Characteristic Unconfined Compressive Strength (f'uc) MPa	-
Minimum Shell Thickness (mm)	30
Weight	-
Units Per Tonne	65.789473684211
Units Per Pallet	90
Units per Square Metre	-
Durability Class	General Purpose
Slip Resistance	
Wall Mass Inc Hollow	199
Solar Absorption Rating	0.55
LRV	-
FRL	-
EPD	Yes
Declare	No
Recycled Content %	-

Diagram



Fire Resistance Levels[^]

Structural Adequacy	60 to 240
Integrity	Hollow: 60. Core Filled: 120
Insulation	Hollow: 60. Core Filled: 120

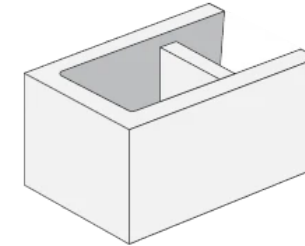
Notes

Maximum slenderness ratio (srf) from AS3700:2018 Table 6.1 is: 18.0 at 60 minutes | 17.0 at 90 minutes | 16.0 at 120 minutes | 15.5 at 180 minutes | 15.5 at 240 minutes. This data represents average results from production lots based on the results achieved by samples selected at random for testing. Figures are accurate at date of publication and subject to change without notice. Contact us for confirmation of product specification. Tested as per AS/NZS 4455.1: 2008 and 4456: 2003. Fire resistance levels as per AS3700: 2018. Acoustic opinion derived from Day Design Pty Ltd. 2012. Tested in accordance with AS 1191:1001 and AS/NZS 1276.1:1999.

Product Details

Product Range	Architec Smooth
Texture Finish	Smooth
Colours	Alabaster, Charcoal, Pearl Grey & Almond
Product Code	
Format	30.92 Open End
Place of Manufacture	-
Length (mm)	390
Width (mm)	290
Height (mm)	190
Size	390x290x190
Core Volume (%)	-
Characteristic Unconfined Compressive Strength (f'uc) MPa	-
Minimum Shell Thickness (mm)	-
Weight	-
Units Per Tonne	-
Units Per Pallet	-
Units per Square Metre	-
Durability Class	General Purpose
Slip Resistance	
Wall Mass Inc Hollow	-
Solar Absorption Rating	0.48
LRV	-
FRL	-
EPD	Yes
Declare	No
Recycled Content %	-

Diagram



Fire Resistance Levels^

Structural Adequacy	-
Integrity	-
Insulation	-

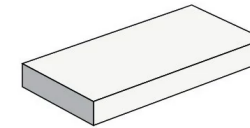
Notes

Maximum slenderness ratio (srf) from AS3700:2018 Table 6.1 is: 18.0 at 60 minutes | 17.0 at 90 minutes | 16.0 at 120 minutes | 15.5 at 180 minutes | 15.5 at 240 minutes. This data represents average results from production lots based on the results achieved by samples selected at random for testing. Figures are accurate at date of publication and subject to change without notice. Contact us for confirmation of product specification. Tested as per AS/NZS 4455.1: 2008 and 4456: 2003. Fire resistance levels as per AS3700: 2018. Acoustic opinion derived from Day Design Pty Ltd. 2012. Tested in accordance with AS 1191:1001 and AS/NZS 1276.1:1999.

Product Details

Product Range	Architec Smooth
Texture Finish	Smooth
Colours	Almond SNSW,NNSW,VIC, Charcoal SNSW,NNSW,VIC, Pearl Grey SNSW,NNSW,VIC & Alabaster SNSW,NNSW,VIC
Product Code	
Format	50.31 Capping Unit
Place of Manufacture	Oakdale, New South Wales
Length (mm)	390
Width (mm)	190
Height (mm)	40
Size	390x190x40
Core Volume (%)	-
Characteristic Unconfined Compressive Strength (f'uc) MPa	-
Minimum Shell Thickness (mm)	-
Weight	-
Units Per Tonne	153.84615384615
Units Per Pallet	270
Units per Square Metre	-
Durability Class	General Purpose
Slip Resistance	
Wall Mass Inc Hollow	-
Solar Absorption Rating	0.55
LRV	-
FRL	-
EPD	Yes
Declare	No
Recycled Content %	-

Diagram



Fire Resistance Levels[^]

Structural Adequacy	-
Integrity	-
Insulation	-

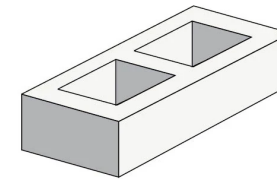
Notes

Maximum slenderness ratio (srf) from AS3700:2018 Table 6.1 is: 18.0 at 60 minutes | 17.0 at 90 minutes | 16.0 at 120 minutes | 15.5 at 180 minutes | 15.5 at 240 minutes. This data represents average results from production lots based on the results achieved by samples selected at random for testing. Figures are accurate at date of publication and subject to change without notice. Contact us for confirmation of product specification. Tested as per AS/NZS 4455.1: 2008 and 4456: 2003. Fire resistance levels as per AS3700: 2018. Acoustic opinion derived from Day Design Pty Ltd. 2012. Tested in accordance with AS 1191:1001 and AS/NZS 1276.1:1999.

Product Details

Product Range	Architec Smooth
Texture Finish	Smooth
Colours	Alabaster &
Product Code	
Format	20.71 Half Height
Place of Manufacture	Oakdale, New South Wales
Length (mm)	390
Width (mm)	140
Height (mm)	90
Size	390x140x90
Core Volume (%)	-
Characteristic Unconfined Compressive Strength (f'uc) MPa	-
Minimum Shell Thickness (mm)	-
Weight	-
Units Per Tonne	-
Units Per Pallet	-
Units per Square Metre	-
Durability Class	General Purpose
Slip Resistance	
Wall Mass Inc Hollow	-
Solar Absorption Rating	0.48
LRV	-
FRL	-
EPD	Yes
Declare	No
Recycled Content %	-

Diagram



Fire Resistance Levels^

Structural Adequacy	-
Integrity	-
Insulation	-

Notes

Maximum slenderness ratio (srf) from AS3700:2018 Table 6.1 is: 18.0 at 60 minutes | 17.0 at 90 minutes | 16.0 at 120 minutes | 15.5 at 180 minutes | 15.5 at 240 minutes. This data represents average results from production lots based on the results achieved by samples selected at random for testing. Figures are accurate at date of publication and subject to change without notice. Contact us for confirmation of product specification. Tested as per AS/NZS 4455.1: 2008 and 4456: 2003. Fire resistance levels as per AS3700: 2018. Acoustic opinion derived from Day Design Pty Ltd. 2012. Tested in accordance with AS 1191:1001 and AS/NZS 1276.1:1999.